

Copy No 4

23 Sep 42

5 NZ INF BDE OPERATION ORDER No 5Ref Map 1/100,000 Sheets 84/42 and 84/48

- INFORMATION 1. Already issued to Units as 2 NZ DIV EXERCISE No 9.
- INTENTION. 2. The BDE will move on 24 Sep from present location to an assembly area, see Trace "A" att.
- METHOD. 3. Units will move in two colns.
- M i h 8  
V t m 20
4. Route.- Trig 69. 49168885 - Trig 105 49598785 - Trig 119 50218745 - Trig 143 50488669.
5. S.P. Trig 69 49168885.
6. Order of March.
- |                                    | <u>Start Time.</u> |
|------------------------------------|--------------------|
| 23 NZ BN                           | 0730               |
| 22 NZ BN                           | 0750               |
| 21 NZ BN                           | 0810               |
| HQ 5 NZ INF BDE                    | 0830               |
| A Coy 5 NZ FD AMB                  | 0840               |
| 28 NZ(MACRI) BN                    | 0850               |
| 17 NZ L A D                        | 0910               |
| 5 NZFD AMB less one <del>coy</del> | 0930               |
7. Halts. (a) 10 mins to each hour, first halt 0850.  
(b) Head of coln will NOT pass Trig 143 50488669 before 1200 hrs.  
(c) Lunch Halt - 1120 - 1200 hrs.
8. Att. Units. 32 NZ ATK BTY ) Will halt in area WEST trig  
42 NZ LT AA BTY ) 143 50488669, and move into  
2 NZ MG COY ) assembly Areas as per trace  
Appx "A" NOT before 1300 hrs.
9. Moves to Assembly Area will be completed by 1500 hrs.
10. 2 NZ DIV PRO COY is marking the limits of formation areas by flags.

ADM. Replenishment Areas 24 Sep 42. No Change

Medical Sick and casualties 5 NZ FD AMB ADS, thence to CORPS MDS 518879.

- INTERCOMN (a) Wireless on moving from present location.  
(b) Att units will each send one DR to report to Signalmaster 5 NZ INF BDE on arrival in assembly area.

ACK:

Signed M.C. Fairbrother  
Major

Time of Signature 1020 Hrs

BM 5 NZ INF BDE.

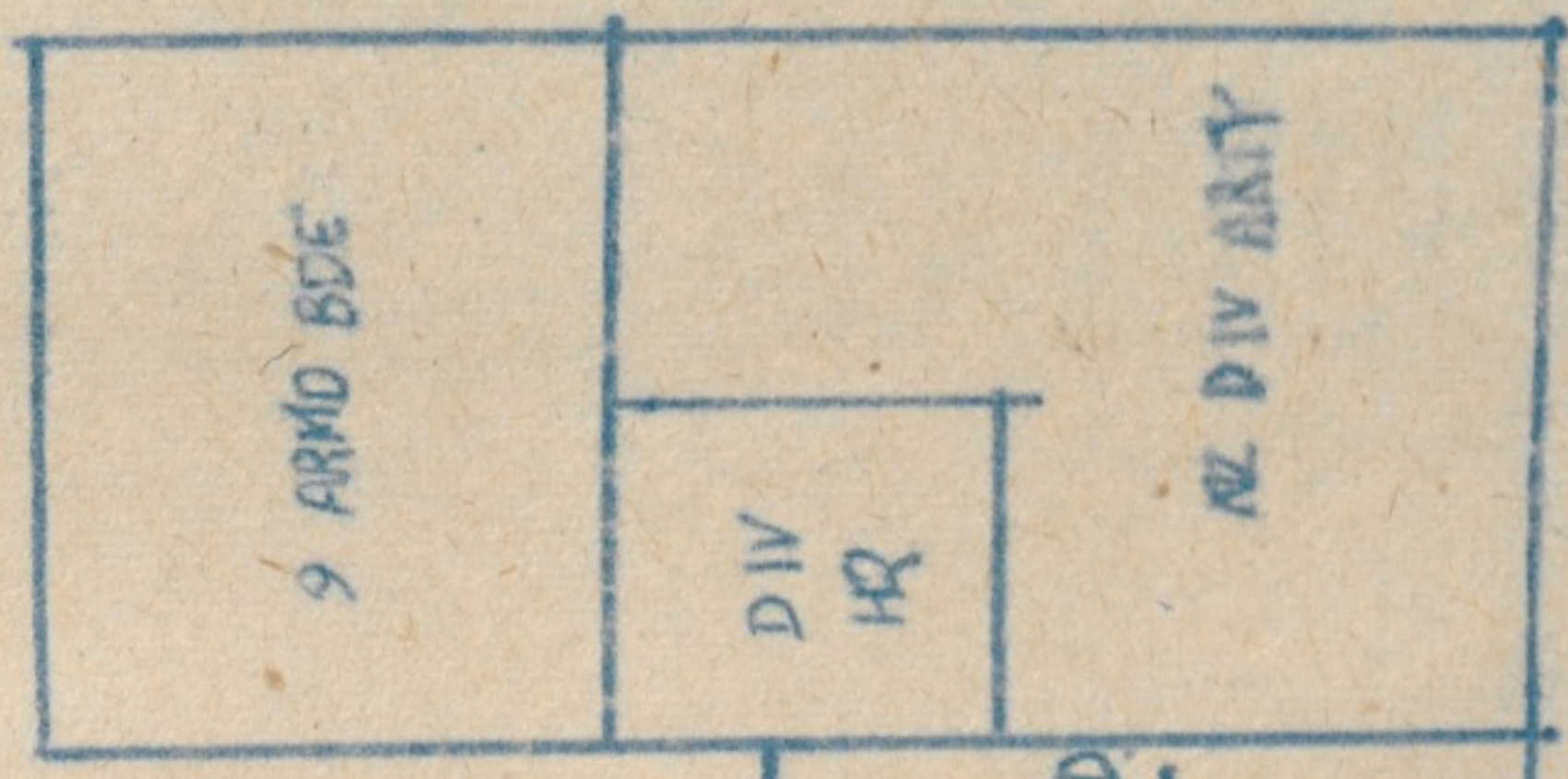
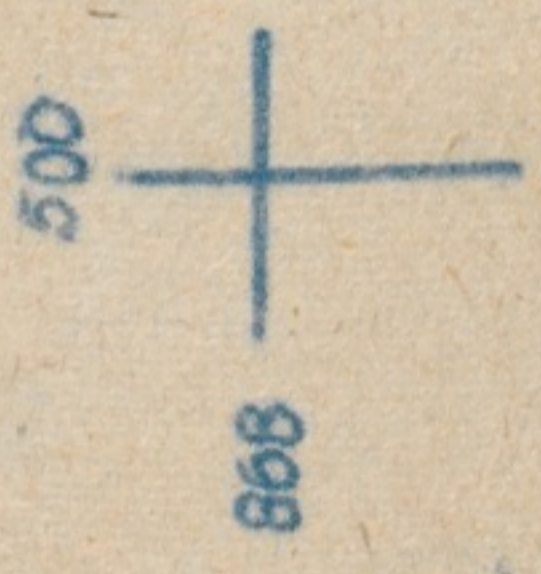
Issued through Sigs and L.O.

EXERCISE SECRET

COPY NO 4

23 SEP 42

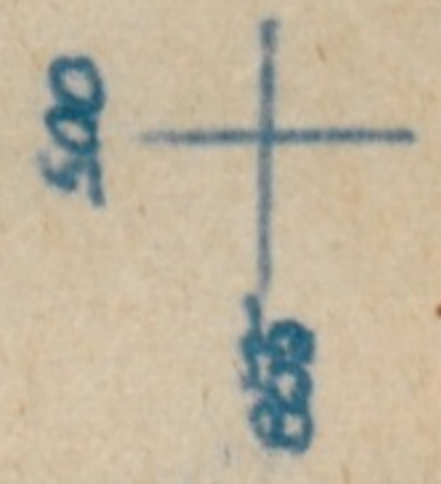
APPENDIX 'A' TO 5 NZ INF BDE OPERATION ORDER NO 5



5 NZ INF BDE  
ATTACHED  
UNITS

25	22	21	HQS	32	28
BN	BN	BN	HQ	Bty	BN
				MG	LAD
				42	
				Bty	

6 NZ INF BDE GP



Archives New Zealand = Te Rua Mahara o te Kāwanatanga.

Ref: 28 NZ (Maori) Battalion Diary, WAII 1 1665 DA 68/1/33, pp 79-80